

# ANGELO ARCHITECTURAL ASSOCIATES, LLC

12314 RIDGEVIEW DRIVE  
URBANDALE, IA 50323  
PH: (515) 250-6950  
FAX: (515) 276-9234  
mthiessena1@mchsi.com

OWNER:  
SOUTH HAMILTON  
COMMUNITY SCHOOL  
DISTRICT  
315 DIVISION STREET  
JEWELL, IA 50130

PROJECT:  
NEW CONCESSION STAND  
FACILITY

PROJECT LOCATION:  
315 DIVISION STREET  
JEWELL, IA 50130

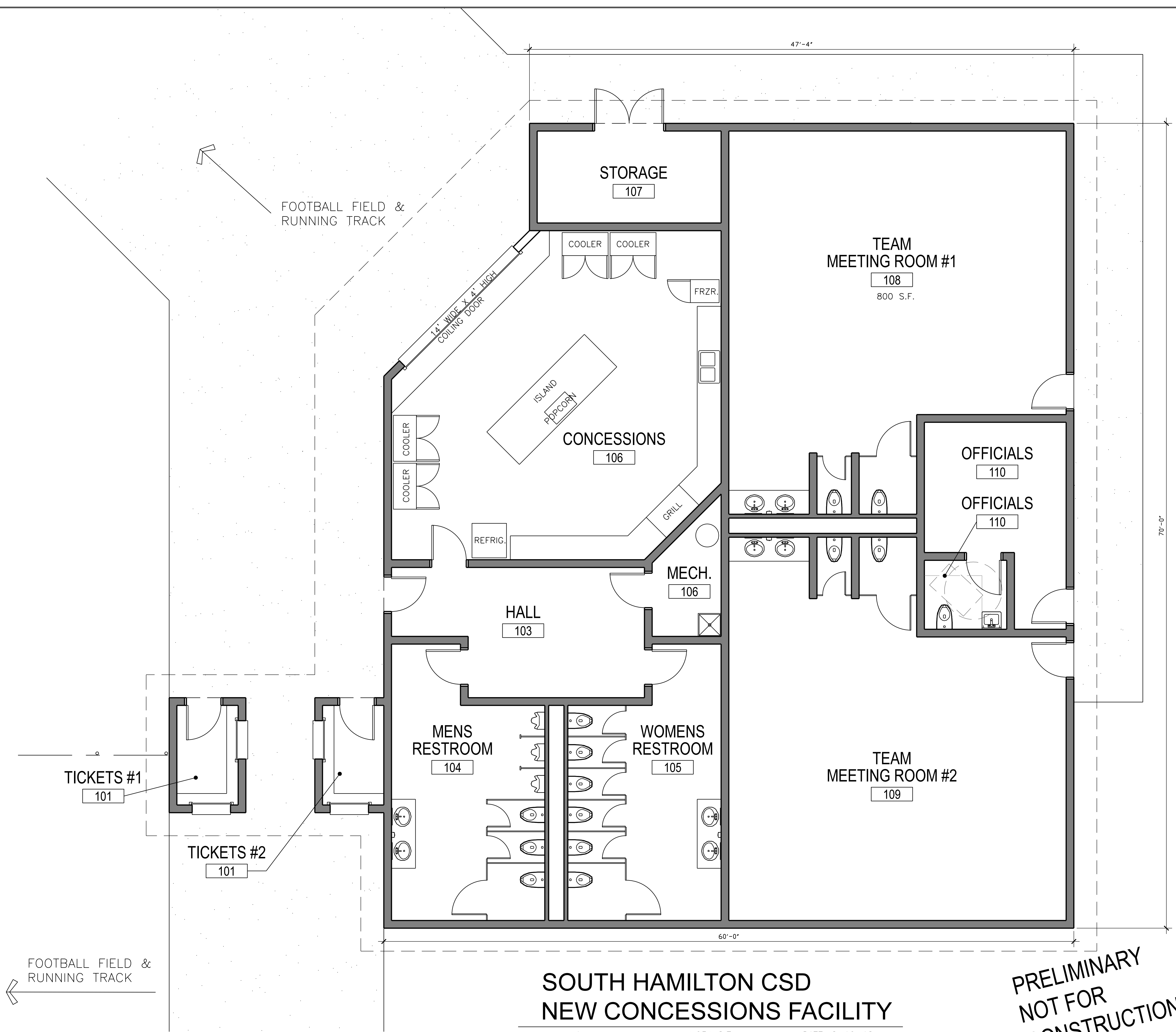
SCHEMATIC  
FLOOR PLAN

JOB NO. 1733  
FEBRUARY 10, 2018

# A1.1

SCHEMATIC DESIGN DRAWING - 2-10-2018

PLOT DATE: Thursday, February 09, 2018 9:18:12 AM USER: ANGELO, MARK



## SOUTH HAMILTON CSD NEW CONCESSIONS FACILITY

SCALE: 1/4" = 1'-0" 4,034 S.F. DATE: 2-10-18

**PRELIMINARY  
NOT FOR  
CONSTRUCTION**

FOOTBALL FIELD &  
RUNNING TRACK

FOOTBALL FIELD &  
RUNNING TRACK

TICKETS #1  
101

TICKETS #2  
101

STORAGE  
107

TEAM  
MEETING ROOM #1  
108  
800 S.F.

COOLER COOLER

COOLER  
COOLER

ISLAND  
POPCORN  
CONCESSIONS  
106

REFRIG.

MECH.  
106

HALL  
103

MENS  
RESTROOM  
104

WOMENS  
RESTROOM  
105

OFFICIALS  
110

OFFICIALS  
110

TEAM  
MEETING ROOM #2  
109

60'-0"

70'-0"

47'-4"